

iema

Institute of Environmental
Management & Assessment

**Institute of Environmental
Management and Assessment**

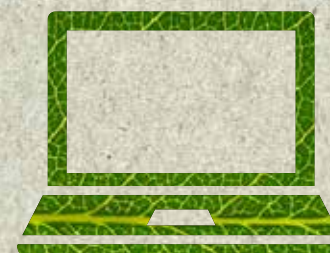
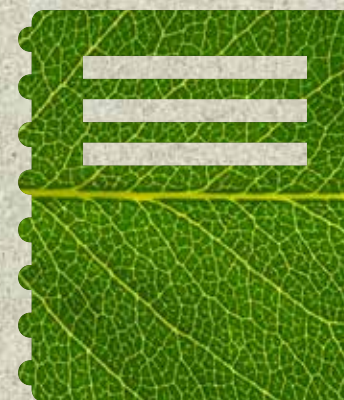
Finance Department
St Nicholas House
70 Newport
Lincoln
LN1 3DP

Tel: +44 (0) 1522 540069

Fax: +44 (0) 1522 540090

Email: info@iema.net

www.iema.net



welcome pack

**You are now part
of the world's
largest and
most influential
membership
organisation for
environmental
and sustainability
professionals.**



Welcome to The Institute of Environmental Management and Assessment (IEMA) the certified home to over 15,000 environmental professionals just like you.

As an organisation, we're here to support you with the knowledge, skills and tools to enable you to be totally effective in delivering excellent environmental performance within your businesses.

Within this pack you will find your membership card, details on your key contacts, a list of useful links and a direct debit form to make renewal of your membership as straightforward as possible.

It's a fact that environmental professionals are good for business and we're here to help promote your potential for positive change and support you to be as effective as possible within your role.

Ongoing professional development will gain you the recognition you deserve from your organisation, clients, suppliers and from your peers. Upgrading your membership will reflect this and we're here to sustain you in your professional journey.

Our training company, IEMA Sustainable Training Solutions (STS) is the place to go if you require quality environmental and sustainable training delivered by trusted partners. Through STS you can be assured that courses will be IEMA approved and will meet your training requirements to the full.

**For more information on available courses,
visit the website at www.iemasts.com**

YOUR KEY CONTACTS

Now you are a member, you will soon become familiar with the names of some of our key staff and representatives. Please feel free to contact them as you wish.

Your area will have a regional chair person and steering group. To find out who this is visit www.iema.net/network. Your region will be aligned to the primary address you provided upon joining. If you wish to change your region for any reason, please just contact the membership team.

You are also welcome to call us to keep your details up to date, renew your membership and for any other general membership queries on 01522 540069 or email info@iema.net.

For event bookings or for details of your regional steering group;
Alison Webb
Call: 01522 540069
Email: events@iema.net

For webinar bookings;
Emily Guest
Call: 01522 540069
Email: webinars@iema.net

For any upgrade or professional assessment queries;
Tammy Benson
Call: 01522 540069
Email: t.benson@iema.net

For any publication purchase queries;
Kate Pochert
Call: 01522 540069
Email: k.pochert@iema.net

For any Environmentalist magazine queries;
Katrina Pierce
Call: 01522 540069
Email: k.pierce@iema.net

For any iema.net or website queries;
Jonathan Hylton
Call: 01522 540069
Email: info@iema.net

USEFUL LINKS...

Now that you've joined us, you have access to a valuable knowledge bank of online resources, environmental news and information on your membership.

For an extensive list of your membership benefits, visit www.iema.net/membership-benefits

Be sure to book on your first event. They are a great way to meet like-minded professionals, discuss hot topics and learn about best practice and policy, visit www.iema.net/events

If you're already thinking of how else you can develop your career now you've joined us take a look at www.iema.net/access-environment-careers-advice.

If you're thinking of upgrading from Student, Graduate or Affiliate to Associate level or above. Visit www.iema.net/membership-upgrade.

Here you'll find out all you need to know about upgrading your membership and the benefits this can bring.

The IEMA Reading Room is a mine of useful information – both current and historical – featuring research papers, position statements, 'how to' factsheets and in depth reports. Begin your exploration by visiting www.iema.net/readingroom

Not all member only information is located at iema.net. Once you have registered with the website you will have dual log-in for www.environmentalisonline.com – the online home of your Environmentalist magazine. From here you'll also have access to the hundreds of environmental jobs that are advertised each month.

Lastly, don't forget to request to join our thriving LinkedIn group. This has over 7,000 members using the forum to discuss hot topics and exchange information. Head to www.iema.net/linkedingroup and we'll let you in!

IEMA is proud to encompass its partners iemaSTS and GACSO



iemaSTS is the home to over 80 training partners delivering both certified and approved IEMA courses across the globe.

Find training solutions for yourself, your workforce or your company at the touch of a button. Log onto our easy-to-use website www.iemasts.com to choose your custom route and search for the delivery method that best meets your needs whether that is course based delivery, distance learning or e-learning.

Chose from over 30 IEMA certified and approved courses including:

- Foundation certificate in Environmental Management
- Associate certificate in Environmental Management
- Working with and Managing with Environmental Sustainability
- EMS Auditing
- ISO14001:2015

If you'd like to understand how you can develop your environmental and sustainability skills, simply visit www.iemasts.com for more details.



The Global Association of Corporate Sustainability Officers (GACSO) is a unique community of practitioners who play a leading role in developing and implementing innovative corporate sustainability strategies.

GACSO is working to invigorate and grow its community of corporate sustainability professionals, establishing an influential and professional reputation.

By becoming a GACSO member you will have complete access to:

- Specific events and online sessions developed by and for corporate sustainability professionals
- Opportunities to contribute to the on-going development of the 'Sustainability Lexicon' and other visionary initiatives
- The opportunity to receive mentoring from leading corporate sustainability professionals and the chance to make your own contribution and sharing of experiences.

Visit www.gacso.org for more information on becoming a GACSO member.



Institute of Environmental Management & Assessment

Please fill in the whole form including official use box using a ball point pen and send it to:

Institute of Environmental Management and Assessment (IEMA)
Saracen House,
Crusader Road
City Office Park
Tritton Road
Lincoln
LN6 7AS

Name(s) of account holder(s):

Bank/Building Society account number:

Branch sort code:

Name and full postal address of your bank or building society:



Instruction to your bank/building society to pay by Direct Debit.

Reference - please quote your IEMA membership number:

Service user number:

648075

for iema official use only. This is not part of the instruction to your bank or building society.

Instruction to your bank or building society
Please pay IEMA Direct Debits from the account detailed in this Instruction subject to the safeguards assured by the Direct Debit Guarantee. I understand that this Instruction may remain with IEMA and, if so, details will be passed electronically to my bank/building society.

Signature(s)

Date

Banks and building societies may not accept Direct Debit Instructions for some types of account



The Direct Debit Guarantee

This guarantee should be detached and retained by the payer. This Guarantee is offered by all banks and building societies that accept instructions to pay Direct Debits. If there are any changes to the amount, date or frequency of your Direct Debit IEMA will notify you 10 working days in advance of your account being debited or as otherwise agreed. If you request IEMA to collect a payment, confirmation of the amount and date will be given to you at the time of the request. If an error is made in the payment of your Direct Debit, by IEMA or your bank or building society, you are entitled to a full and immediate refund of the amount paid from your bank or building society - If you receive a refund you are not entitled to, you must pay it back when IEMA asks you to. You can cancel a Direct Debit at any time by simply contacting your bank or building society Written confirmation may be required. Please also notify us.